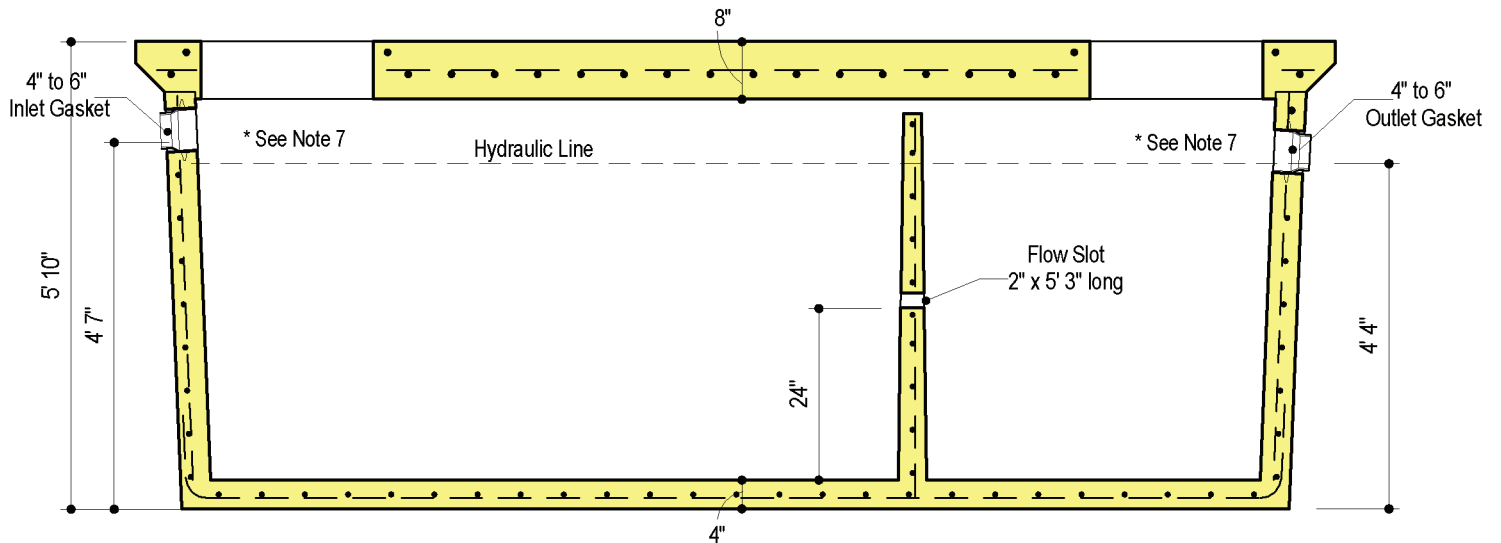


**PLAN VIEW**  
**w/Top Slab**



**SECTION VIEW**

**DESIGN DATA & GENERAL NOTES**

- [1] Concrete strength  $f'c=5,000$  p.s.i. @ 28 days. Density = 150 pcf.
- [2] Cement - Portland Type I/II per ASTM C 150-92.
- [3] Admixtures & plasticizers per ASTM C 260-86 & C 494-92.
- [4] Reinforcing per ASTM A615, Grade 60, domestic. Min. 1-1/2" cover.  
Walls, base, & top slab designed for HS-20 loading.
- [5] Top slab sealed with butyl rope mastic.
- [6] Maximum 3' of earth cover over top slab.
- [7] Depending on use of tank, Inlet & Outlet baffle may be required by code.

*Risers, Riser Lids, Pipes & Fittings Sold Separately*

**PRECAST  
TRANSPORTATION  
SOLUTIONS**

322 Bynum Road  
Forest Hill, Maryland 21050  
Phone: 410-838-3007

**TRAFFIC RATED  
PRECAST 2000 GALLON SEPTIC TANK  
TWO COMPARTMENT**

[www.precasttransportationsolutions.com](http://www.precasttransportationsolutions.com)